

Laboratory and Medical Services in Korea

Small Animal Anesthesia System

Wide range application
Simplicity design
Reasonable price
Multi-channel gas delivery



Small Animal Inhalation Anesthesia System & Waste Anesthetic Gas Evacuation System
2016-2017



Small Animal Portable Anesthesia Systems

Features

- Designed to be portable by reducing size and weight
- User friendly and economical operate
- Versatile and easy to operate
- Researcher can easily move the device for a special purpose
- Designed for use with non-rebreathing systems
- Reduce mechanical dead space
- Enable to multiple operating by 3channel low flowmeters

Specifications

- L-PAS-01 Dimension(HxWxD) : 31 x 35.5 x 17cm
- L-PAS-01 Weight : 14kg
- L-PAS-02 Dimension(HxWxD) : 31 x 39 x 17cm
- L-PAS-02 Weight : 16kg
- L-PAS-03 Dimension : 31 x 43 x 17cm
- L-PAS-03 Weight : 18kg

Product components

- Base Bracket
- Precision Vaporizer with IN/OUT End Cap
- Anesthesia Flowmeter(O₂(0-2LPM), N₂O(0-2LPM), AIR(0-2LPM))
- 2LPM Low Flowmeters, 3Ea



Product No.	Products
L-PAS-01	Small Animal One Flow(O ₂) Anesthesia System
L-PAS-02	Small Animal Two Flows(O ₂ /N ₂ O) Anesthesia System
L-PAS-03	Small Animal Three Flows(O ₂ /N ₂ O/AIR) Anesthesia System

Tec 3 Vaporizers

Features

- Vaporizer Type : Isoflurane and Sevoflurane
- Extended Capacity : 250ml
- Both funnel fill and key fill systems are available
- Precision flow rate and temperature compensated
- Calibration Environment : 22.5Degrees, Oxygen 100%, 2LPM Flow
- Specifically calibrated for our anesthesia system
- Guaranteed for three years

Product No.	Products
L.P-TIK-01	Tec 3 Isoflurane Key Fill
L.P-TIF-02	Tec 3 Isoflurane Funnel Fill
L.P-TSK-01	Tec 3 Sevoflurane Key Fill
L.P-TSF-02	Tec 3 Sevoflurane Funnel Fill





Waste Anesthetic Gas Evacuation System

Features

- Actively remove exposed anesthesia gases for researcher safety
- Easily installed on the table next to the anesthesia systems
- Simply connect to various anesthesia systems
- Applied the large storage charcoal filter Canister(Absorption capacity : 200g)

Specifications

- Power : 220Vac, 60Hz
- Full Load Current : 0.31A
- Maximum Air Volume : 0.72m³/min
- Vacuum Pressure : 90mmAq
- Dimension(HxWxD) : 18x27x27cm
- Full Load Current Consumption : 75W
- Maximum Air Speed : 10.95m/sec
- Discharge Pressure : 90mmAq
- Weight : 10kg

※ Only be used with non-flammable gases.



Product No.	Product
AM-LMS-01	Waste Anesthetic Gas Evacuation System

Anesthetic Gas Filter Canisters

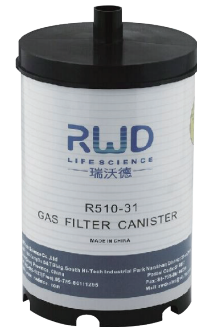
Features

- Absorption capacity : 200g, 50g
- Simply change once it has increased 200 and 50g
- Quickly and simply attached to the evacuation systems
- Tested to ensure an air flow of 60LPM
- Flow resistance not exceeding 2.0cmH2O

Specifications

- Active Canister Weight : 300g(S), 800g(L)
- Exhausted Weight : 350g(S), 1000g(L)

Product No.	Products
L.R-R510-31	Anesthetic Gas Filter Canister, 6 Canisters, Large
L.R-R510-31S	Anesthetic Gas Filter Canister, 6 Canisters, Small



4Channel Anesthetic Gas Delivery System

Feature

- 4channel gas delivery system operating simultaneously during a multiple test

Specifications

- Dimension(HxWxD) : 22x20x13.5cm
- Weight : 8kg
- Flowmeter Range : 0.1-1LPM

Product No.	Product
L-MDS-04	4Channel Anesthetic Gas Delivery System





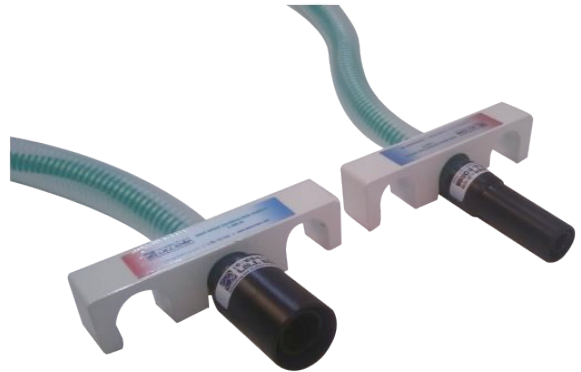
Small Animal Anesthesia Mask Set for Rat, Mouse

Features

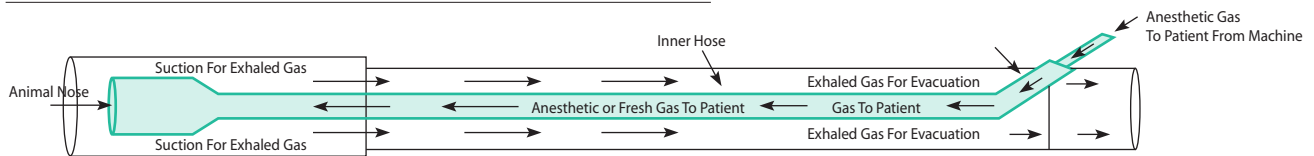
- Most effective user friendly mask set for rat and mouse
- Included the two types of optimal mask parts and breathing circuit

Specifications

- Total Length : 1.5m
- Rat Mask Diameter : Inner Dia : 19mm, Outer Dia : 35mm
- Mouse Mask Diameter : Inner Dia : 12mm, Outer Dia : 19mm



Product No.	Products
1SAM-LMS-01	One Way Small Animal Anesthesia Mask Set for Rat
1SAM-LMS-02	One Way Small Animal Anesthesia Mask Set for Mouse



(Mask Diagram)

Anesthesia Mask Stabilizer

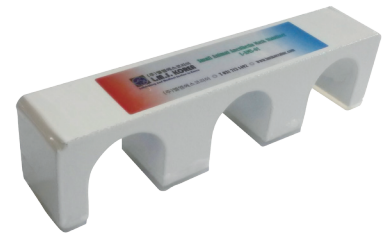
Feature

- Easy and stable fixation of the mask sets

Specifications

- Dimension(WxDxH) : 13x2.5x3.3cm
- Weight : 440g

Product No.	Product
L-AMS-01	Anesthesia Mask Stabilizer



Induction Chambers

Feature

- Available in two sizes for rat and mouse
- Locking latches and rubber sealing makes leak proof
- Anesthetic gas outlet ports are used for vacuum and natural exhaust

Specifications

- Rat Chamber Dimension(HxWxD) : 15x30x20cm
- Mouse Chamber Dimension(HxWxD) : 10x15x15cm

Product No.	Products
RMC-01	Induction Chamber for Rat
RMC-02	Induction Chamber for Mouse

